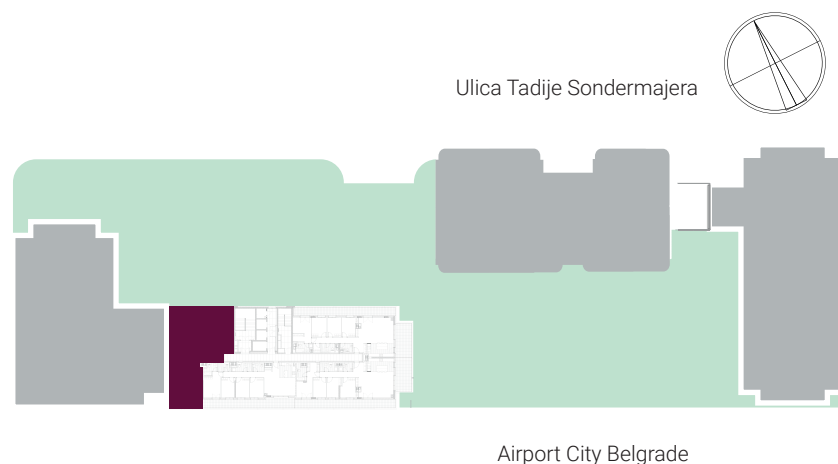
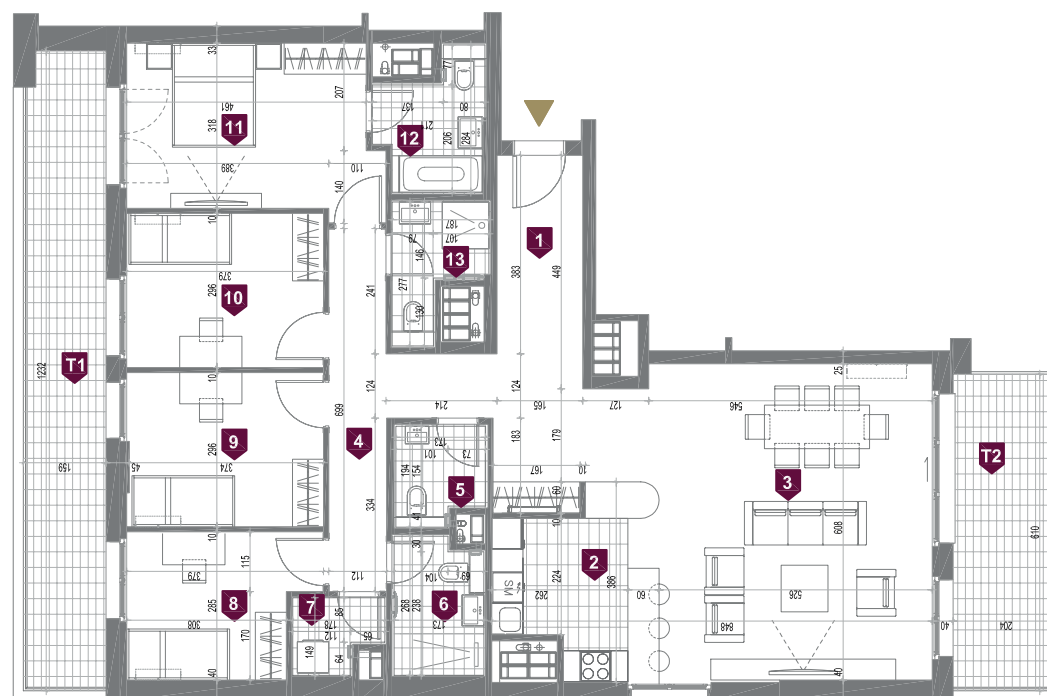


## ORIJENTACIJA STANA U KOMPLEKSU



Omladinskih brigada

## OSNOVA STANA



## POVRŠINA

PROSTORIJE		
1	ULAZNI HODNIK	11.69 m <sup>2</sup>
2	KUHINJA	9.91 m <sup>2</sup>
3	DNEVNA SOBA	34.76 m <sup>2</sup>
4	DEGAŽMAN	10.26 m <sup>2</sup>
5	TOALET	3.10 m <sup>2</sup>
6	KUPATILO	4.49 m <sup>2</sup>
7	VEŠERNICA	2.40 m <sup>2</sup>
8	SPAVAČA SOBA	9.59 m <sup>2</sup>
9	SPAVAČA SOBA	11.19 m <sup>2</sup>
10	SPAVAČA SOBA	11.24 m <sup>2</sup>
11	GL. SPAVAČA SOBA	15.40 m <sup>2</sup>
12	KUPATILO	4.70 m <sup>2</sup>
13	KUPATILO	3.79 m <sup>2</sup>
<b>NETO STANA BEZ TERASA</b>		<b>132.52 m<sup>2</sup></b>
T1	TERASA	19.29 m <sup>2</sup>
T2	TERASA	12.37 m <sup>2</sup>
<b>UKUPNO</b>		<b>164.16 m<sup>2</sup></b>

## 3D PRIKAZ STANA



22

176